

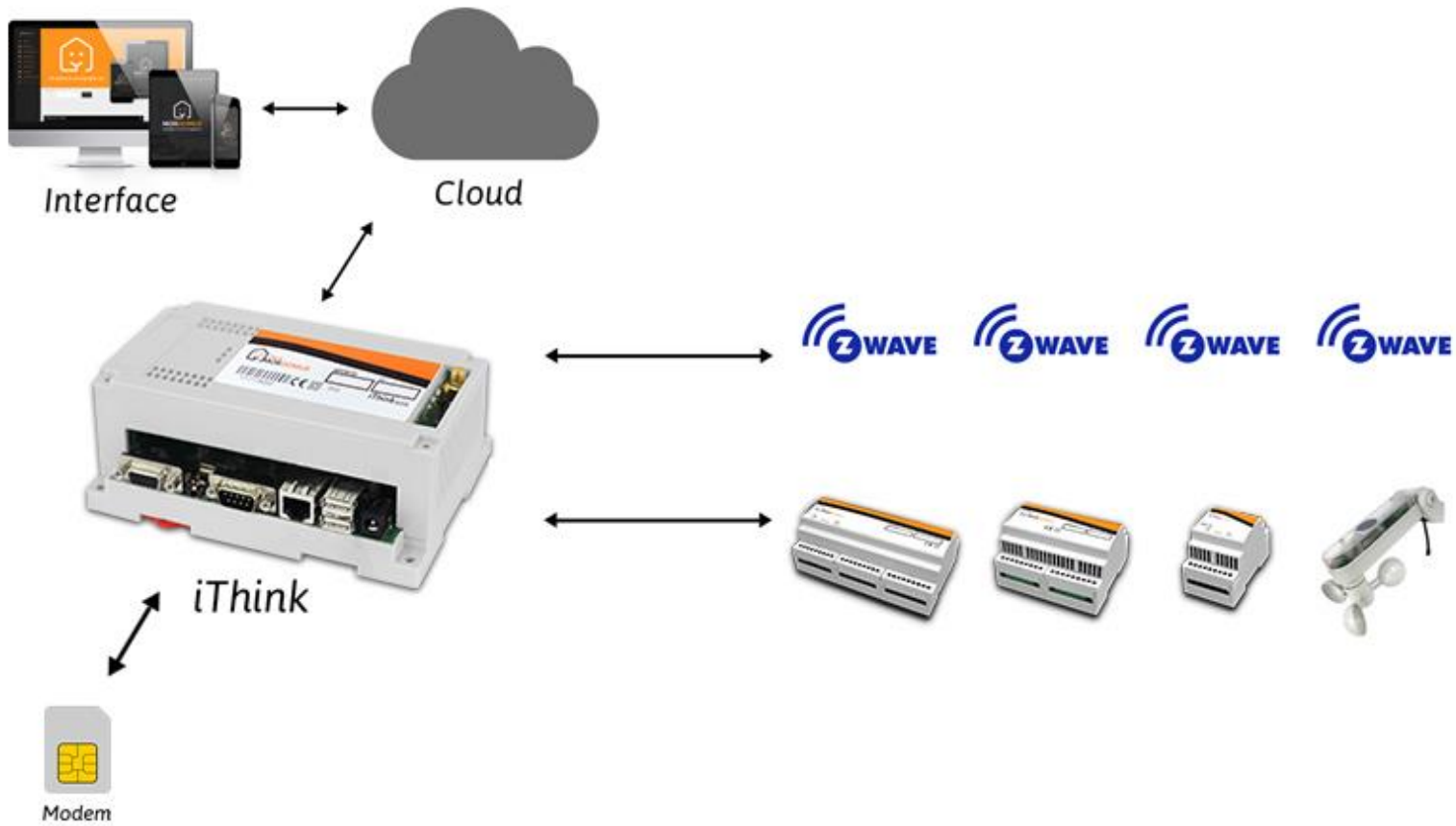
TRAINING LEVEL II



RECIPIENTS

- Installation companies with the MD training lv1
- Distributors with MD training lv1

MORDOMUS ARCHITECTURE



MORDOMUS MODULES



WIRELESS CONNECTIVITY

- Z-WAVE

INTERFACE MODULES

- APPs
- LP283WD
- LP15

COMUNICATION MODULES

- iPSB

INPUT AND OUTPUT MODULES

- iOCT41
- iDI32
- iAC88
- METEO
- PIR MS
- iTM1
- iTM3
- iOC66
- iOF88
- iLD88
- iLED88
- iUD4
- iW48
- iSND8

15' DISPLAY TOUCH SCREEN W/ WALL SUPPORT



SPECIFICATIONS

15' TFT Display • 5 wires resistive touch screen w/ controller USB/RS232 •
Resolution: 1024x768 • Dot pitch 0,297x0,297mm • 16,7M colors •
250 cd/m2 brightness • Contrast ratio: 600/1



MORDOMUS LCD TACTILE 2,8"



SPECIFICATIONS

Wired Lan Network with POE • Wall mount or furniture mount • Local control • RJ-45 x 1,10/100 Base-TX communication interface • LCD 2,8 TFT • POE standard IEEE 802.3af 48VDC voltage supply

Designed for home and building automation. It is equipped with a high-resolution color touch screen TFT and fits into the wall electrical boxes.

iTHINK

Main Module



SPECIFICATIONS

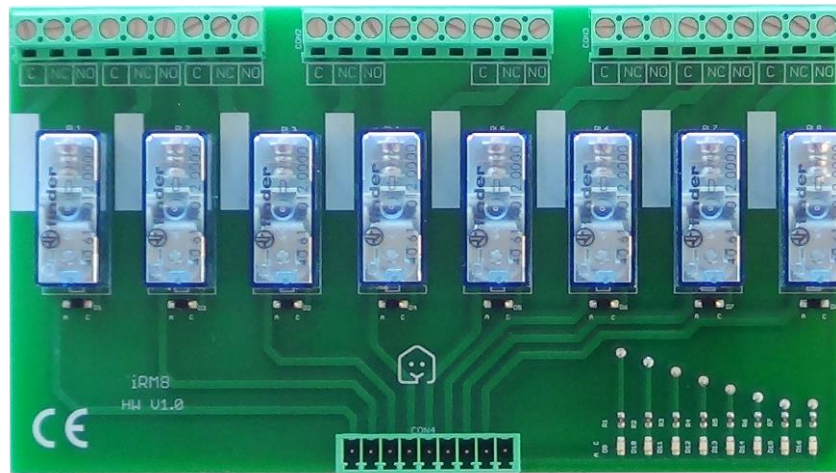
All in one device • 8 inputs + 8 outputs • 1500 inputs + 1500 connection outputs •
LAN / WLAN / Bluetooth / Z-Wave / GSM





iRM8

Relay ON/OFF card

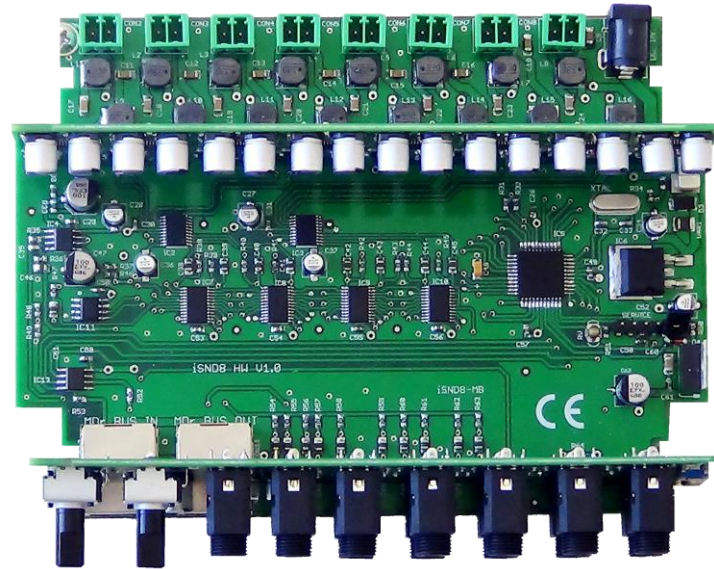


ESPECIFICAÇÕES

8 command points • Control by 8 iThink Open Collector outputs • Socket switching, boiler switching, motor switching, lighting, etc. • 9 Din rail

iSND8

Sound Module



SPECIFICATIONS

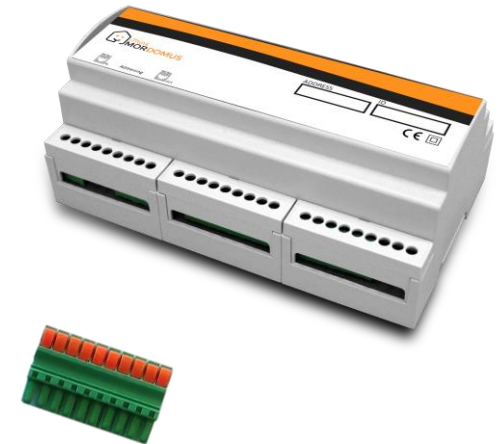
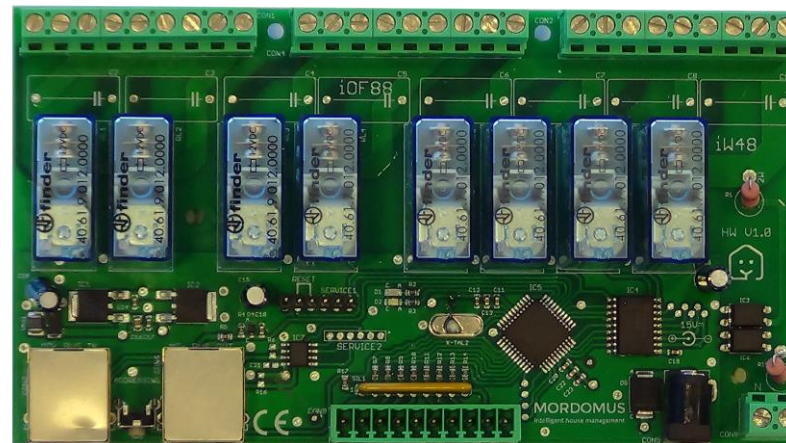
8 channels audio amplifiers 10W RMS digital class • 11 audio channels inputs • Audio bridge to next iSND8 • 9DIN rail or non-standard fixation





iOF88

ON/OFF Control



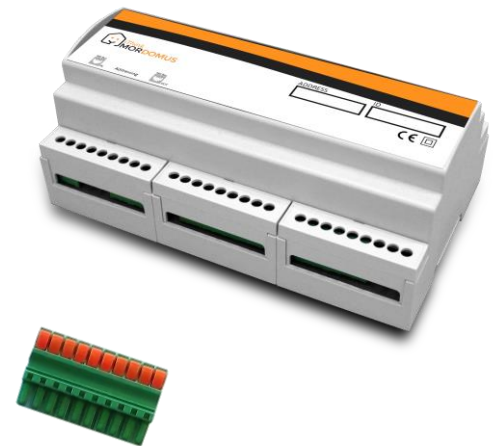
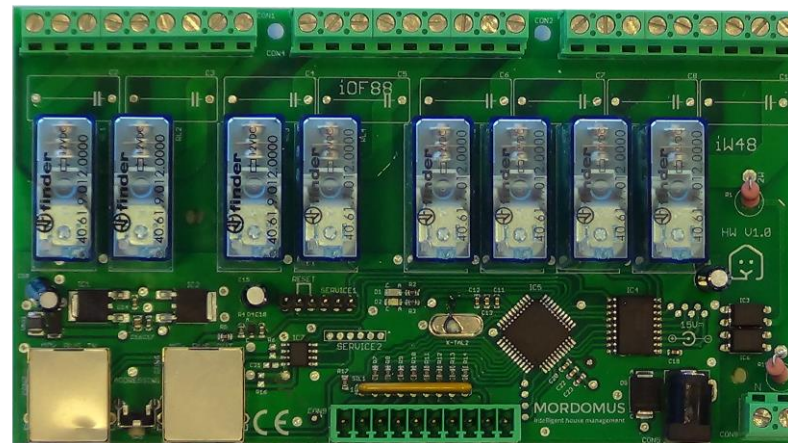
SPECIFICATIONS

8 outputs 16A • 8 inputs with energy meters • Stand alone or network control • 9DIN rail



iW48

Blinds/Curtains Control

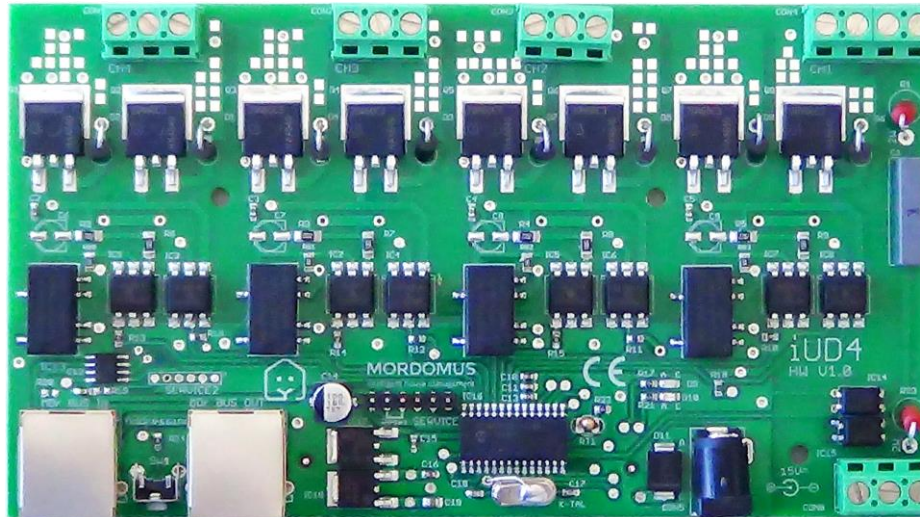


SPECIFICATIONS

4 outputs 16A for windows • 8 inputs for Windows and blade control • Stande alone or network control • 9DIN rail

iUD4

Lights Control



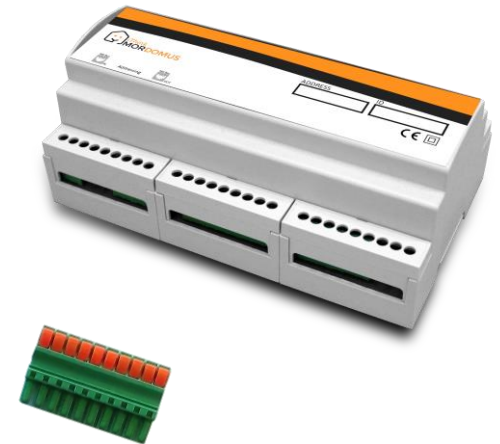
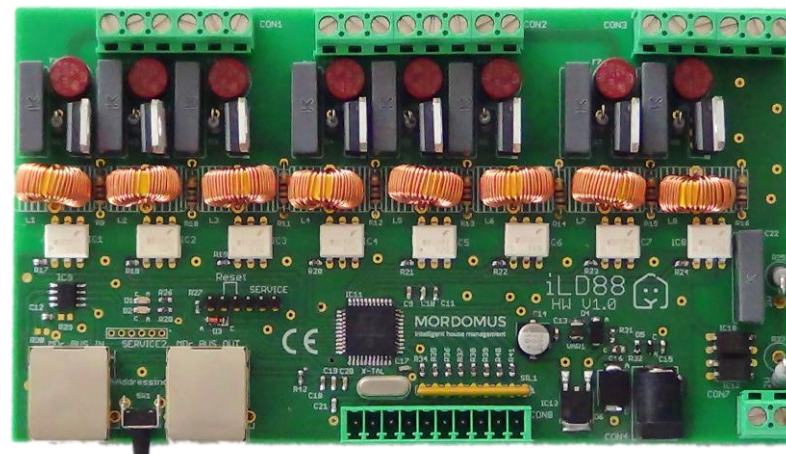
SPECIFICATIONS

4 output channels Dimmer 250W • Control by Leading Edge/Trailing Edge •
Overload and short circuit protection • 9DIN rail



iLD88

Dimmer illumination control



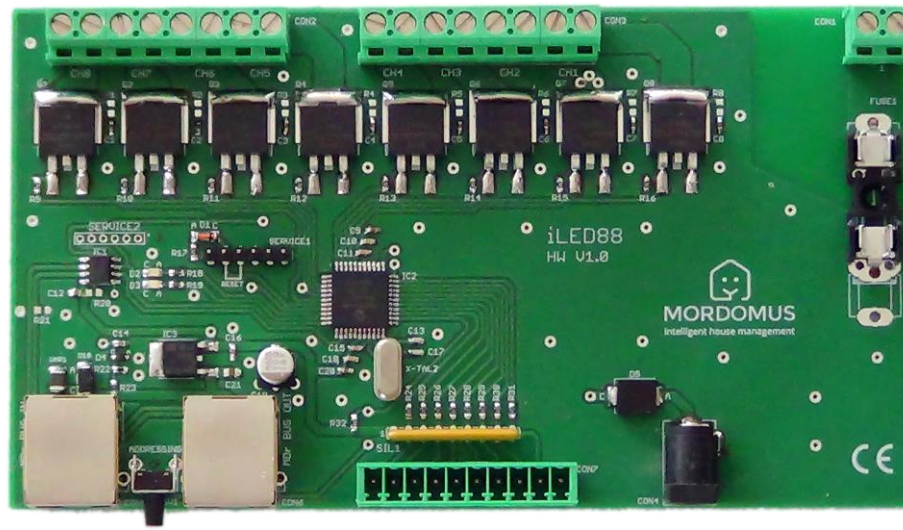
SPECIFICATIONS

8 output channel of Dimmer 350W • 8 inputs with energy meters • Stand alone or network control • 9DIN rail



iLED88

LED and RGB illumination control

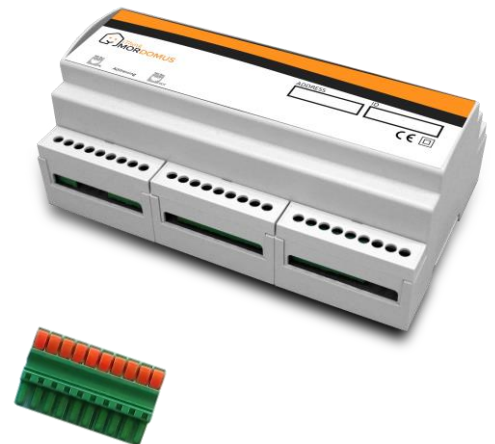
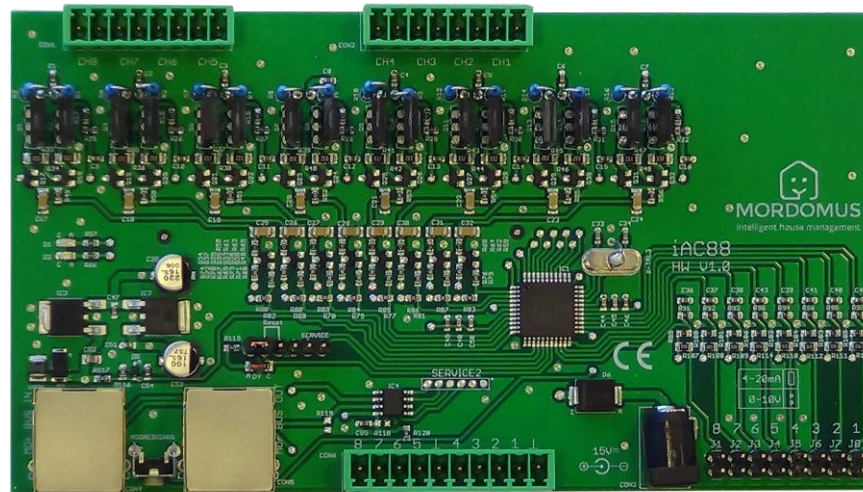


SPECIFICATIONS

- 8 output channels PWM LED Dimmer 120W@12V • 2 channels RGB mode selectable
- 8 inputs with energy meters • 9DIN rail

iAC88

Analog output control



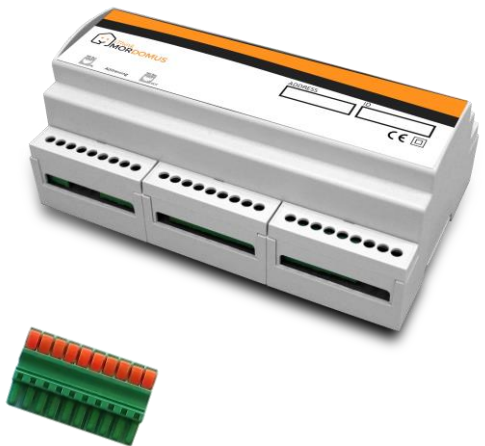
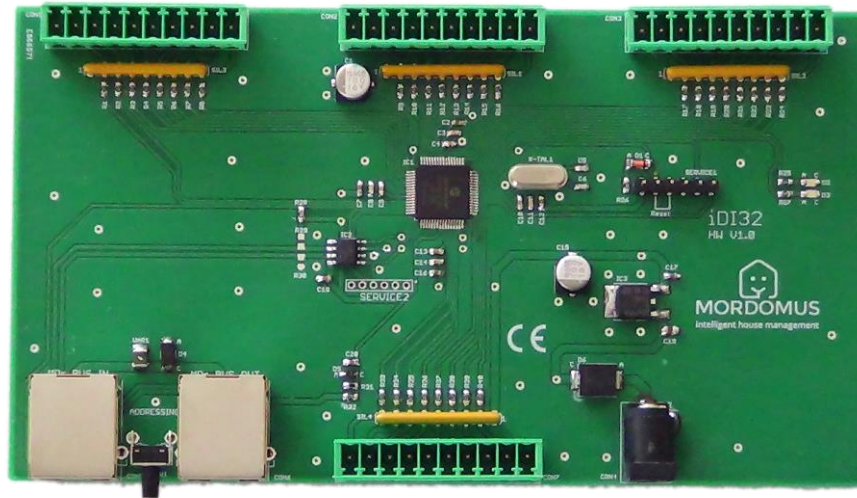
SPECIFICATIONS

8x 0-10V analog output channel • 8x 0-10V/4-20mA analog input channel
Stand alone or network control • 9DIN rail



iDI32

32 Digital Inputs

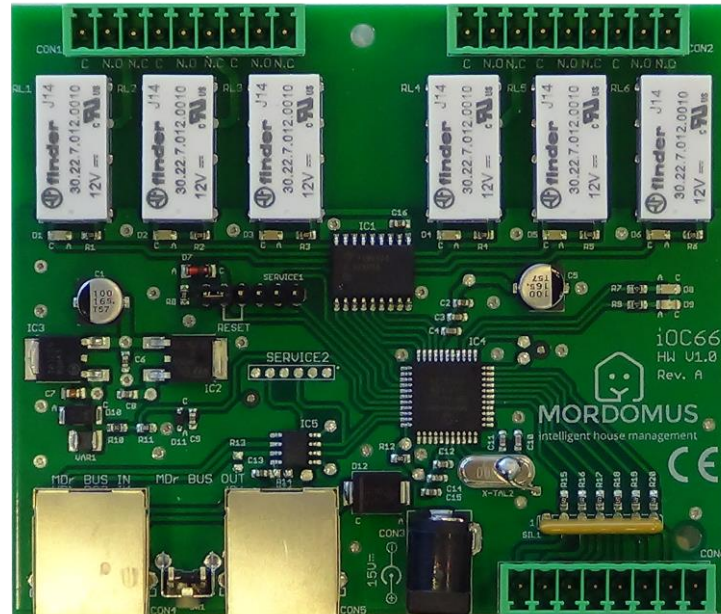


SPECIFICATIONS

32 digital inputs for switches/sensors/energy meters
9DIN rail or non-standard fixation

iOC66

Potential Free Contact Inverter



SPECIFICATIONS

6 outputs 2A • 6 inputs with energy meters • Stand alone or network control • 6DIN rail

iTM3

Interface PT100/PT1000/DS18B20



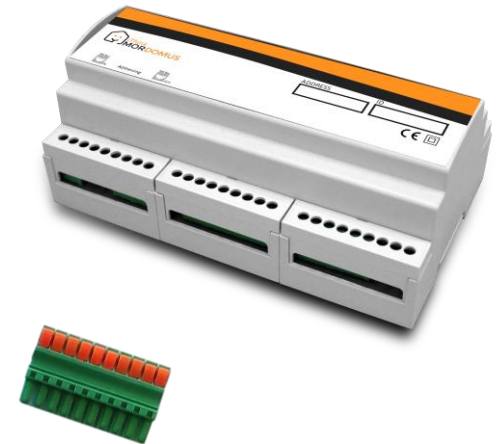
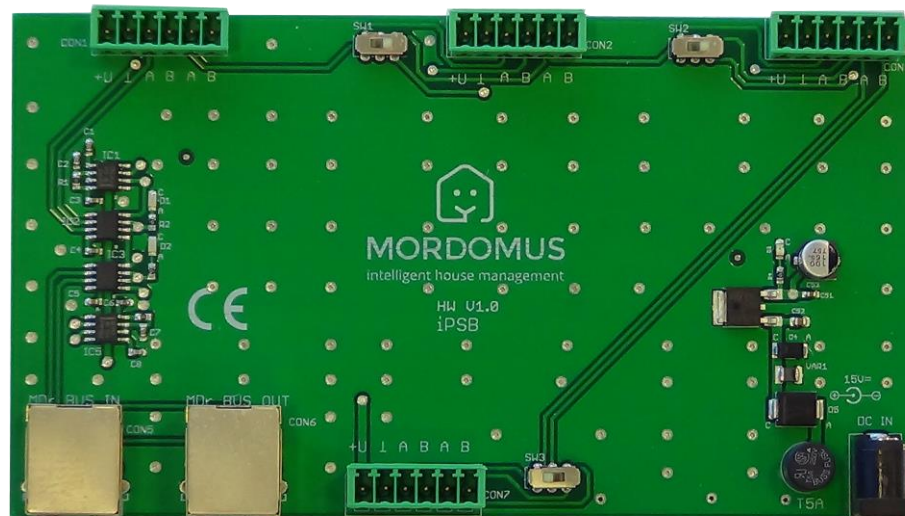
SPECIFICATIONS

PT 100/PT1000 high precision reading sensor • External DS18B20 high precision reading sensor • Self temperature sensor included • 3DIN rail or non-standard fixation • Control by MDBus



iPSB

Interconnection with systems outside the frame



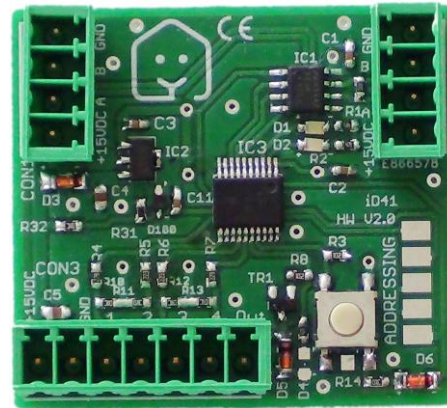
SPECIFICATIONS

1 MDBus input • 1 MDBus output
4 MDBus for iMeteo, iMS5, iTM1 and iOCT41 interconnection



iOCT41

4 Digital inputs and 1 Open collector output



SPECIFICATIONS

4 generic digital inputs • Small PCB to include behind wall switch • Daisy chain bus easy to connect • Low power consumption



iMETEO

Weather station



SPECIFICATIONS

4 reading points (temperature, light, wind and rain detection) • Control by MDBUS •
Actual weather forecast • Outside installation • Power supply voltage 15VDC •
Working temperature -30°C to 60°C



iMS5

Multi-sensor



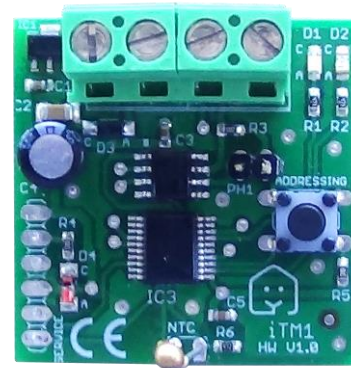
SPECIFICATIONS

24 reading points (20 IR inputs, 1 temperature reading, 1 light, 1 motion sensor, 1 tamper) • Control points: 8 outputs • Control by MDBUS • Temperature reading and light, ir interface and PIR and tamper sensors reading • IR outputs: learning of 8 remote control keys for data transmission (IR unit control)



iTM1

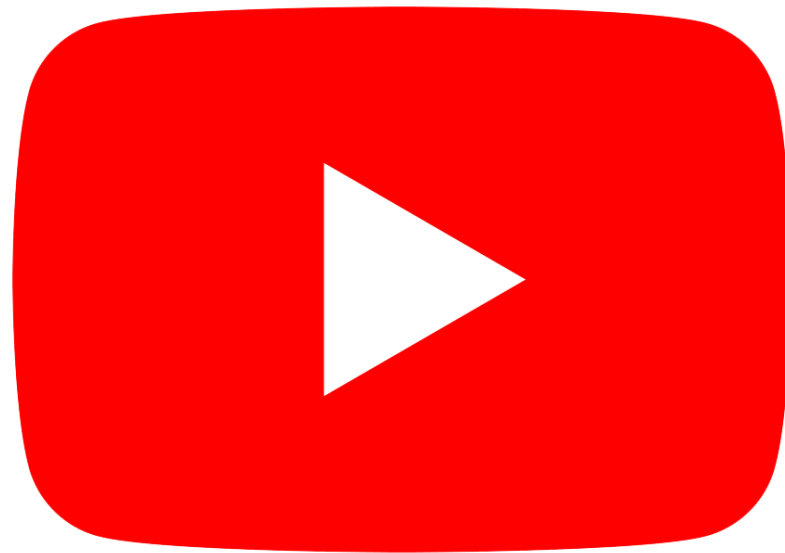
Temperature reading



SPECIFICATIONS

Built in interior high precision temperature sensor • Control by MDBus
Small PCB to embed inside wall switch

MORDOMUS WIRED



iZWCS1

Key Switch



SPECIFICATIONS

Wireless repeater • Voltage: 230 V AC, 50 Hz • Maximum charges: 6A (1380W) •
Range up to 30m(straight line) • Dimensions: 86x86x47mm



iZWCST1

Touch Switch



SPECIFICATIONS

Voltage: AC 100V-240V, 50/60Hz • Maximum charges: 110V 800W/220V 1500W •
Dimensions: 86x86mm • CE Certification



iZSPIRF

Motion sensor



SPECIFICATIONS

Motion detection range: 110° 7m • Load: DC 5V/1A • Range up to 30m (straight line) •
Working temperature: -10°C to 50°C • Working humidity: <80%



iZSPIR_B/C/D

Inlay PIR motion sensor



SPECIFICATIONS

Motion detection up to 12 meters • 360° (adjustable steering) • Water proof •
Tamper proof with AES 128bit encryption



iZSL6

Door Sensor



SPECIFICATIONS

Door sensor • Tamper proof with AES 128bit encryption • Dimensions: 96x28x23mm / 50x10x12mm • 2 years battery life (aprox.)



iZSSMK1

Smoke sensor



SPECIFICATIONS

Early fire alert • Built in alarm siren • Tamper proof with AES 128bit encryption • EN14604 certification



iZSMK1

Smoke sensor



SPECIFICATIONS

Volume: 80-110dB • Current: DC 5V / 1A • Range up to 30m (straight line) •
Operating temperature: -10°C up to 50°C • Operating humidity: <80%



iZT1

Thermostat for AC systems



SPECIFICATIONS

- Thermostat for AC systems
- Temperature measurement: -50°C to 125°C
- Direction connection 230V AC or 24V DC





iZSL1

Multi-sensor



SPECIFICATIONS

4 in 1 sensor (door and window, motion, brightness, temperature) • Tamper proof with AES 128bit encryption • Dimensions: 96x28x23mm / 50x10x12mm • 2years battery life (aprox.)

iZSL2

Multi-sensor



SPECIFICATIONS

Motion detection, brightness and temperature reading • AES 128bit encryption proof • Dimensions: 96x28x23mm / 50x10x12mm • Battery life 2 years



iZSL4

Multi-sensor



SPECIFICATIONS

Humidity and temperature detection • AES 128bit encryption proof • Dimensions:
96x28x23mm • Battery life 5 years



iZSL7

Multi-sensor



SPECIFICATIONS

Door and window, temperature and brightness sensor • Tamper proof with AES 128bit encryption • Dimensions: 96x28x23mm / 50x10x12mm • 2 years battery life (aprox.)



iZSL3

Multi-sensor



SPECIFICATIONS

3 in 1 sensor (flood, humidity and temperature) • Tamper proof with AES 128bit encryption • CE / FCC / Z-Wave Plus certification • 5years battery life (aprox.)

iZSL5

Multi-sensor



SPECIFICATIONS

Low consumption flood sensor • Tamper proof with AES 128bit encryption • CE / FCC / Z-Wave Plus certification • 5 years battery life (aprox.)

iZ2EM

Power meter



SPECIFICATIONS

- Automatic power report
- 2 CT (120A) clamps
- Power supply voltage AC 110V 240V
- Overcharge protection
- Automatic repeater for other devices



iZPLG1

Controlled Wall plug with energy meter



SPECIFICATIONS

Serves as an interface between the existing socket and the electrical equipment to be connected • Maximum current: 3000W, 13A • Power monitors • Overload protection



iZPLG2

Controlled dimmer wall plug



SPECIFICATIONS

Controlled Wall plug with dimming function • For incandescent lamps only •
Maximum current: 13A • Z-Wave signal repeater



iZPLG3

Plug control with energy meter

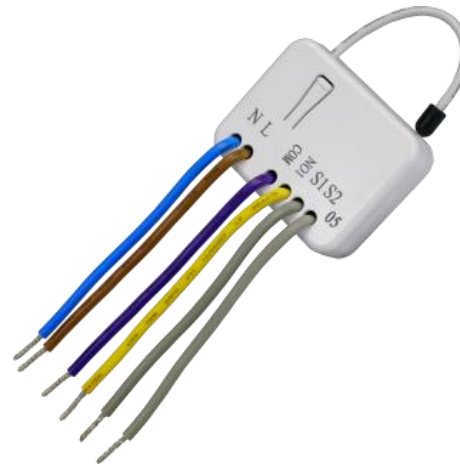


SPECIFICATIONS

Control ON/OFF • Working voltage AC 110V-230V AC, 50/60Hz • Maximum load:
13A • Energy meters • Dimensions: 43x43x65mm

iZOF11

Light, plug control



SPECIFICATIONS

Automatic power report • Single relay • Overcharge protection • Automatic repeater for other devices • Dimensions: 48x39x16mm • CE / FCC / Z-Wave Plus certification



iZOF22

Double Relay Controller



SPECIFICATIONS

Automatic power report • Dual relay • Overload protection • Automatic repeater for other devices • Dimensions: 48x39x16mm • CE / FCC / Z-Wave Plus Certificate



iZWIN1AC

Dimmer controller



SPECIFICATIONS

Automatic calibration • Overcharge protection • Automatic repeater for other devices • CE / FCC / Z-Wave Plus certification



iZOFL

Dimmer bulb



SPECIFICATIONS

On/Off by remote control • Led – Max: 20W • Incandescent lamp • Max: 200W •
Maximum load: 200W • Automatic repeater





iZDM21

Dimmer controller



SPECIFICATIONS

Dimmer control for lighting • Overcheger protection • Automatic repeater for other devices • Led-Max: 130W • CE / FCC / Z-Wave Plus certefication



iZDM3

Dimmer controller



SPECIFICATIONS

0-10V inputs • For light intensity or fan speed control • Support several difernts lamp types

iZTCT1

Electrovalve



SPECIFICATIONS

High compatibility • Power supply 12V DC / 1A • Valve pressure: 1,6MPa • Manual activation in case of power failure • Valve size: 1/2", 3/4", 1", 1,25", 1,5" • CE/FCC certifications

iZSIR1

Alarm siren



SPECIFICATIONS

6 ringtones • 110dB siren • Tamper proof with AES 128bit encryption • Dimensions:
110x110x19mm



iZSIRI1

Alarm siren

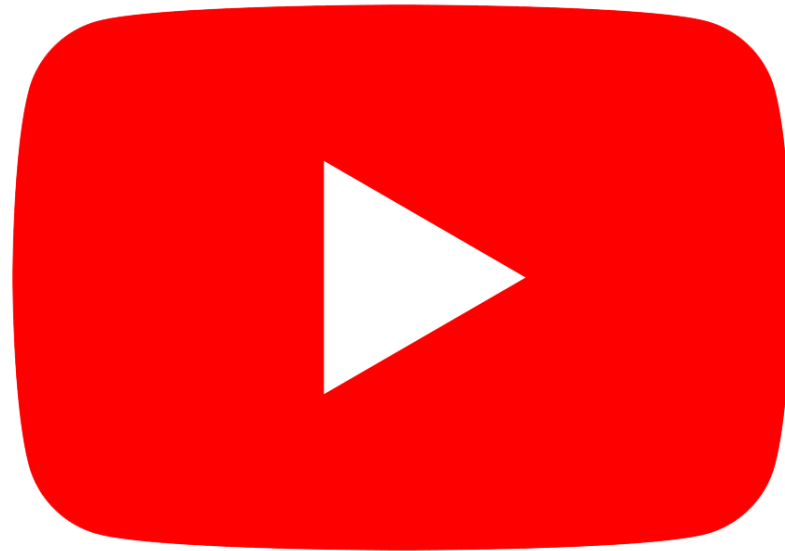


SPECIFICATIONS

Volume: 80-110dB • Load: DC 5V/1A • Range up to 40m (straight line) • Working temperature: -10°C to 50°C • Working humidity: <80%



MORDOMUS WIRELESS



**BECAUSE ALL HOUSES
DESERVE A SMART HOME AUTOMATION
EVEN INHABITED..**



THANK YOU FOR YOUR ATTENTION